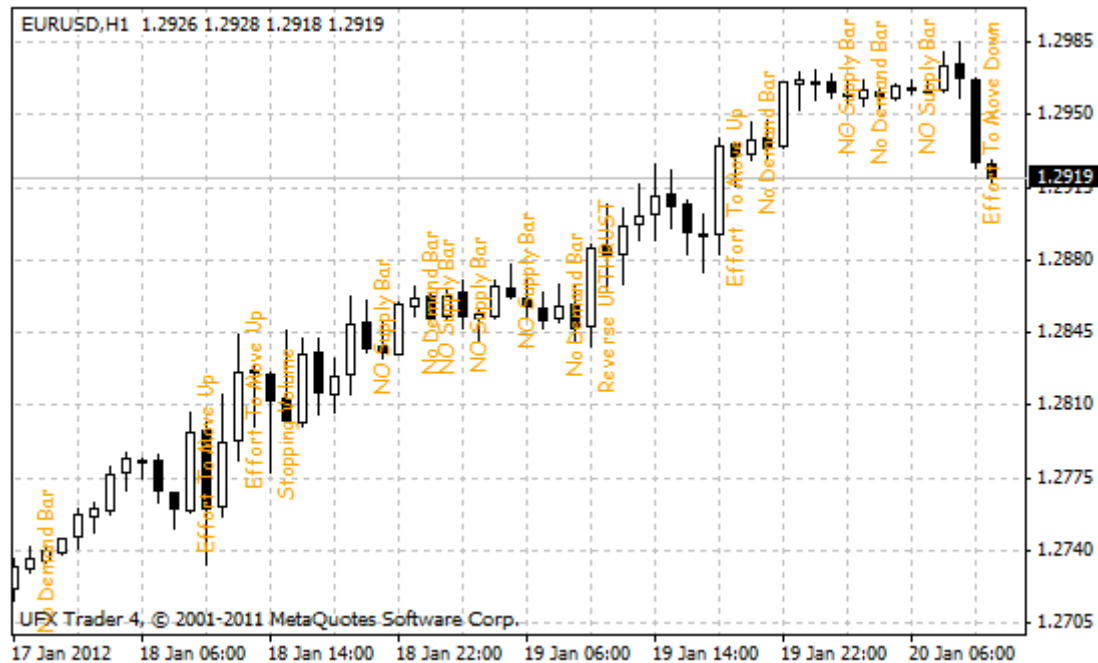


The VSA Text

Presented indicator is based on volumetric analysis. Vertical text is marked in candle lack of demand, stop the volume, candle lack of volume, pressure on the price down.

This indicator should be used in conjunction with any indicator of the volume and with support and resistance lines.



To learn more about this Indicator and download its source code on MQL4 you can here:

<http://codebase.mql4.com/5716>